

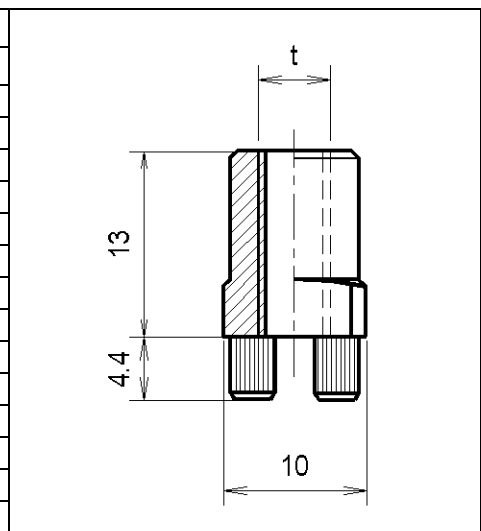
General Description

The high current Press-Fit terminal blocks and spacers of the **PowerClamp** Series are designed for the solderless PCB or bus bar mount by the famous **SOFTPRESS** technique. This technology guarantees a very low contact resistance between the PCB and the **PowerClamp**. These **PowerClamp** components handle continuous currents from 100 up to 600 Amps and appear in different standard configurations:
N- Series – terminal block with internal thread (nut) - (see this document)
B - Series – terminal block with external thread (bolt)
L - Series – terminal block with 90° mounting (horizontal thread or hole)
H - Series – spacer without thread (through hole spacer)
D - Series – spacer with double press-fit zone
 Various accessories allow the enlargement of the applications (see *accessories and applications*)



Technical Specifications

Metric thread		N1004M4	N1005M4
UNC thread		N1004U4	N1005U4
Current rating ¹⁾		150 A	200 A
Metric thread size	t	M4	M5
UNC thread size	t	#8 - 32	#12 - 24
Max. torque		2.1 Nm / 1.6 lbf ft	4.2 Nm / 3.1 lbf ft
Max. insertion force (PCB)		1'200 N / 270 lbf	
Min. extraction force (PCB)		1'100 N / 250 lbf	
Material		CuZn40Pb2 / CW617N	
Contact Surface ²⁾		2 μ BroxAlloy	
Weight		4 g	



¹⁾ The max. current depends on the PCB copper thickness.

²⁾ On request other platings

Recommended PCB Configuration

for PCB configuration see DT0101
http://www.broxing.com/Applications/dt0101_plated_holes.pdf

PCB thickness: 1.5 – 3.2 mm

PCB Press-Fit Standards:
IEC 60352-5, DIN EN 60352-5

PCB DRILLING PLAN

min. pad diameter: 140mils